



# 20 YEARS OF PURE DOMINATION

ALL BLACK EXHAUST

RACING RED MONOSHOCK

GLOSSY BLACK FRAME

ALL NEW LIVERY - CHAMPAGNE GOLD & BLACK

DYNAMIC KIT

DYNAMIC PRO KIT



**Apache**  
**RTR**  
**310**  
RACING DNA UNLEASHED

# SPECIFICATIONS

## Engine

### Type

SI, 4 Stroke, 4 Valve, Single Cylinder,  
Liquid Cooled, Reverse Inclined

### Engine Capacity

312.2 cc

### Maximum Power

Sport/Track Mode  
28 kW@9800 Engine rpm (38 PS@9800 engine rpm)  
Urban/Rain Mode  
22 kW@7600 Engine rpm (30 PS@7600 Engine rpm)

### Maximum Torque

Sport and Track Mode - 29 Nm@7900 Engine rpm  
Urban and Rain Mode - 26.5 Nm@6700 Engine rpm

### Bore

80 mm

### Stroke

62.1 mm

### Fuel Injection

Bosch - Closed Loop RT-FI

### Bore to Stroke Ratio

1.29

### Starting

Electric Start

### Idle Speed

1700 ± 200 rpm

### Ignition

Dynamically Controlled Integrated High Energy  
Ignition System

### Power-to-Weight Ratio

0.144 kW/kg

### Compression Ratio

12.17 :1

### Air Filter

Dry Paper Filter

### Cooling System

Liquid Cooled

### Muffler

Single Pipe and Single Body Design

### Clutch

Wet Multi Plate - 7 Plate Design, RT Slipper Clutch

### Gearbox

6 Speed

## Dimension

### Height

1135 mm

### Length

2001 mm

### Wheelbase

1365 mm

### Ground Clearance

180 mm

### Saddle Height

810 mm

## Wheel and Tyre

### Rim Size (front)

MT 3.0 x 17

### Rim Size (rear)

MT 4.0 x 17

### Tyre Size (front)

110/70-ZR17 M/C 54W  
Tubeless Michelin ROAD 5

### Tyre Size (rear)

150/60-ZR17 M/C 66W  
Tubeless Michelin ROAD 5

## Performance

### Max Speed

164 km/h  
Sport/Track Mode

### Acceleration 0-2 sec (speed in km/h)

49 km/h

### 0-60km/h (time in sec)

2.82 s

### 0-100km/h (time in sec)

6.74 s

## Electrical

### Battery

12V, 8Ah

### Headlamp

Bi-LED Projector,  
30W @ 13 V

### Tail Lamp

LED 4 W

### Instrument Cluster

5" TFT Screen  
Connected Cluster

## Brakes

### Front

300 mm dia Petal Disc  
with ABS

### Rear

240 mm dia Petal Disc  
with ABS

### Brake Fluid

DOT 4

## Fuel Tank Capacity

### Full

11 L

## Weights

### Kerb Weight

174 kg

### Max Payload

130 kg

## Features

### Performance

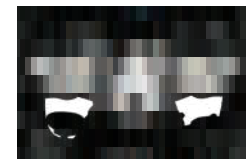
Unique Reverse Inclined  
DOHC Engine



RTDSC with  
Launch Control



Fully Adjustable  
Front & Rear Suspension



### Technology

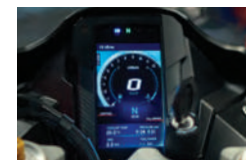
Bi-Directional Quickshifter



Race-Tuned Winglets



4 Ride Modes



### What's New

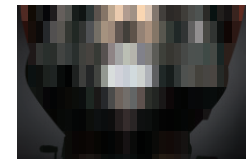
Racing Red KYB  
Suspension



All-Black  
Exhaust



20 Years  
Limited Edition Crest



## Chassis and Suspension

### Frame

Trellis Frame, Split Chassis

### Front Suspension

Inverted Cartridge Telescopic Fork

### Mono Tube Floating Piston Gas Assisted Shock Absorber

Two Arm Aluminium Die-Cast Swingarm

### Dynamic Kit

- » Brass Coated Drive Chain
- » TPMS (Tyre Pressure Monitoring System)
- » Fully Adjustable KYB Front & Rear Suspension

### Dynamic pro Kit

- » Keyless Ride Control
- » Launch Control
- » Cornering TRACTION Control
- » Cornering ABS Control
- » Wheelie Control
- » Slope Dependent Control
- » Cornering Cruise Control
- » Rear Lift-Off Control
- » Cornering Drag-Torque Control

